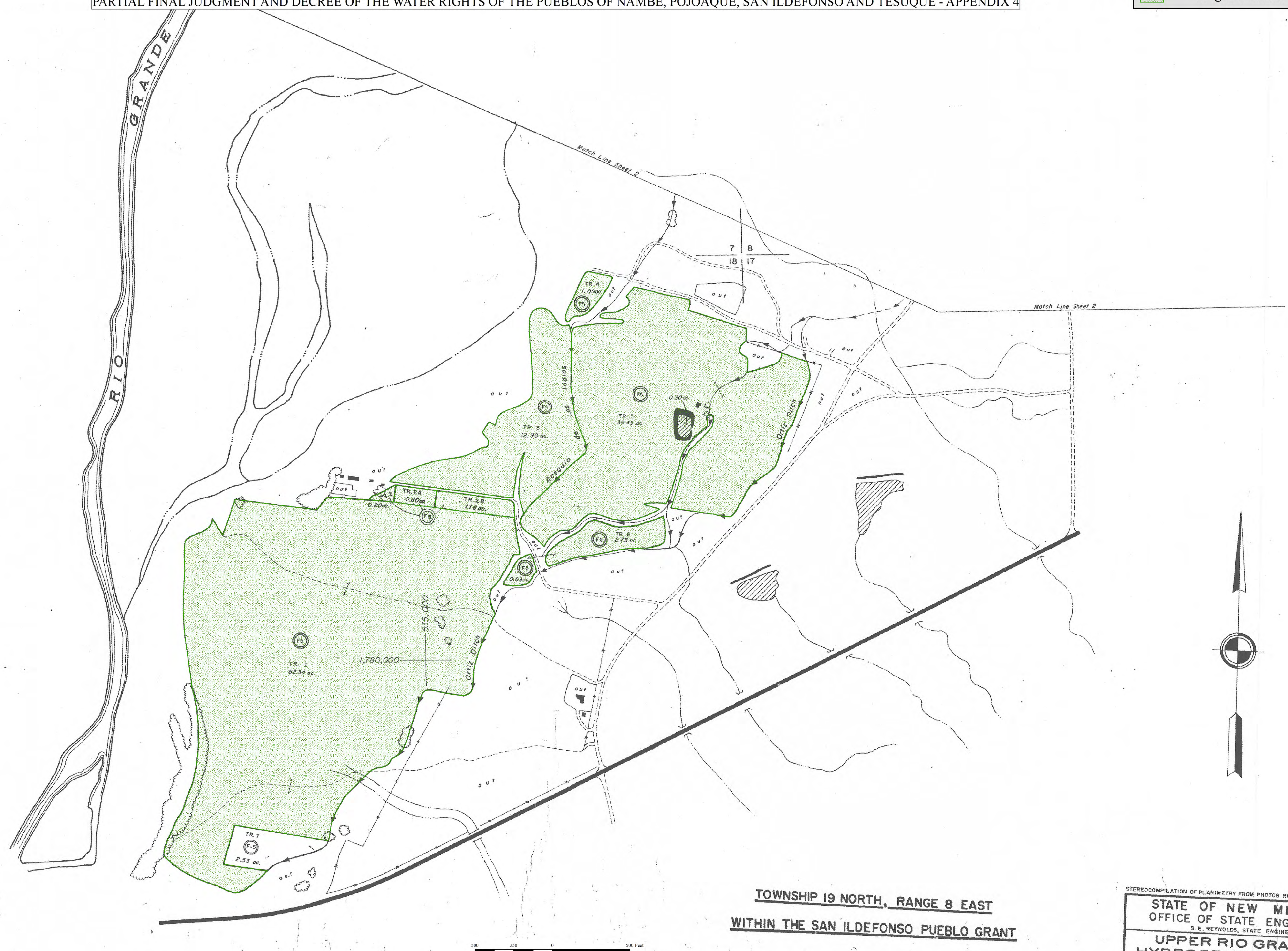
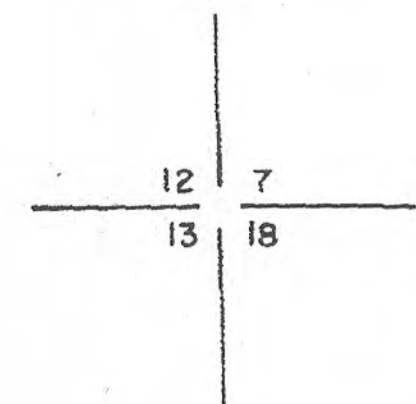


APPENDIX 4 - FIGURE 1 - Pueblo de San Ildefonso Irrigated Lands

PARTIAL FINAL JUDGMENT AND DECREE OF THE WATER RIGHTS OF THE PUEBLOS OF NAMBE, POJOAQUE, SAN ILDEFONSO AND TESUQUE - APPENDIX 4

LEGEND

 Irrigated Tracts - See Table 1A



TOWNSHIP 19 NORTH, RANGE 8 EAST
WITHIN THE SAN ILDEFONSO PUEBLO GRANT

Map assembled for printing at a scale of 1:3600, at a size of 24 x 36 inches.

Prepared by US Bureau of Indian Affairs,
 Southwest Regional Office,
 Albuquerque, NM
 September 2013

Base map reproduced from the
 State of New Mexico, Office of State Engineer,
 Upper Rio Grande Hydrographic Survey,
 Nambé - Pojoaque - Tesuque, 1964.

STEREOCOPIATION OF PLANIMETRY FROM PHOTOS RGD 5-60, 5-59

STATE OF NEW MEXICO
 OFFICE OF STATE ENGINEER
 S. E. REYNOLDS, STATE ENGINEER

UPPER RIO GRANDE
 HYDROGRAPHIC SURVEY
 NAMBE - POJOAQUE - TESUQUE
 1964

ENGINEER SURVEYOR TRACED BY APPROVED	F. R. ALLEN E. COOPER STEREOCOPIATION BY: J. L. THOMAS M. H. BOYCE	SCALE: 1" = 300'
		SHEET NO. 1